



HINTERS®

Silens Works 29 Peckover Street, Bradford, BD1

- TWO BEDROOM DUPLEX APARTMENT
- SECURE GATED PARKING
- AVAILABLE NOW
- PART FURNISHED
- COUNCIL TAX BAND- C
- CITY CENTRE LOCATION
- LIFT ACCESS
- ELECTRIC HEATING
- EPC RATING- D
- LOCAL AMENITIES, SCHOOL AND TRANSPORT LINKS WITHIN THE AREA

£700 Per Calendar Month - Deposit £807

Silens Works 29 Peckover Street, Bradford, BD1

Hunters Bradford are pleased to present this charming part-furnished duplex flat to let. The property features two bedrooms and one bathroom, making it ideal for professionals or couples seeking a comfortable and modern living environment.

The flat offers a sought-after open plan kitchen/lounge design, providing a spacious and versatile space for dining, entertaining, or relaxing. The kitchen comes complete with all the essentials, and the reception room provides a welcoming area to unwind after a long day.

One of the unique features of this property is its secure gated parking, providing residents with peace of mind knowing their vehicles are safe. Additionally, the property benefits from lift access, making it easily accessible for all.

The flat is situated in a prime location with excellent public transport links and local amenities within close proximity. This sought-after location offers both the convenience of city living and the charm of a close-knit community.

The property is rated D for energy efficiency and falls within council tax band C. Please note, the property is offered part-furnished, providing an excellent opportunity to personalise the space to your taste.

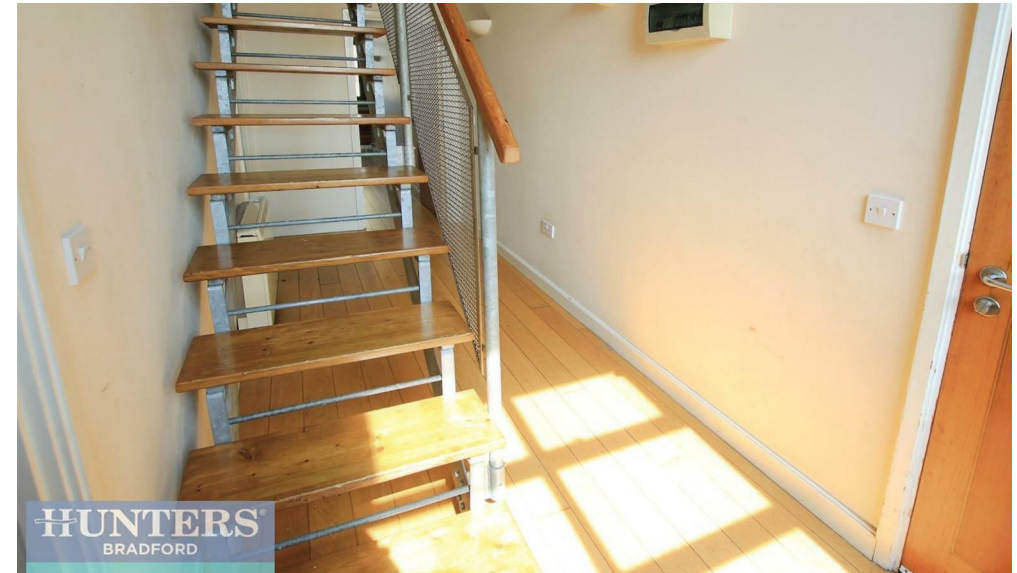
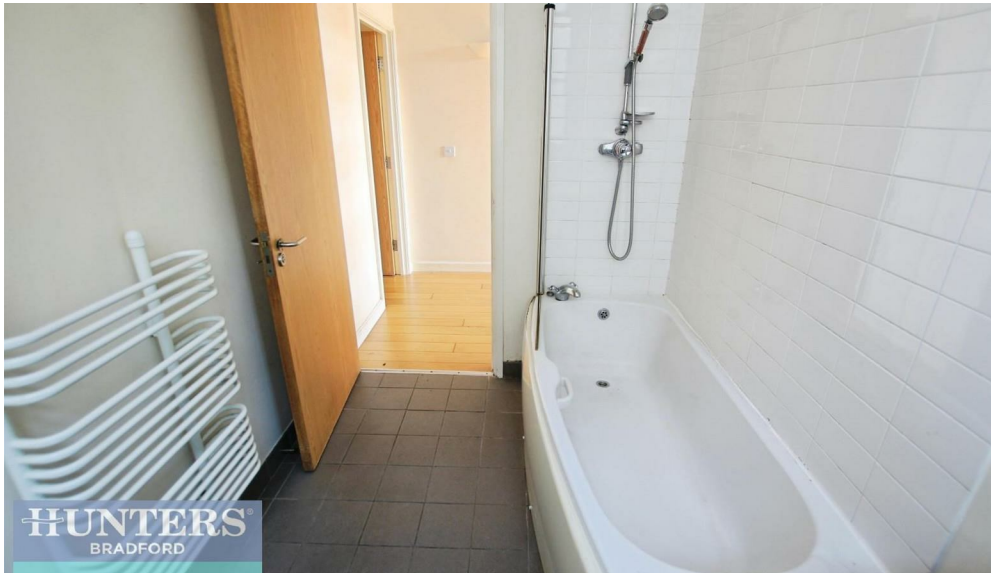
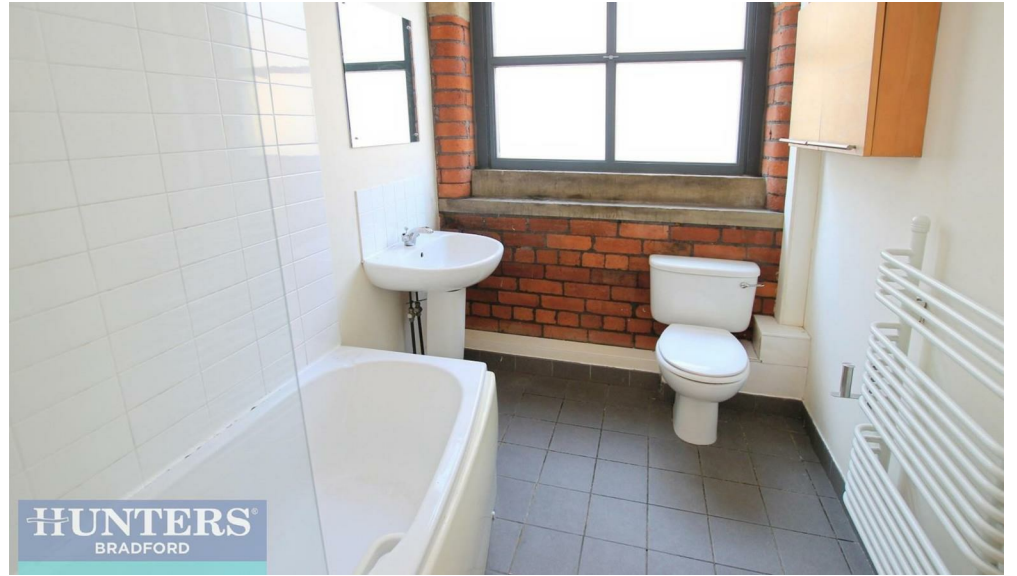
This property offers a unique combination of modern living, security, and convenience. Its location and features make it a perfect choice for professionals or couples looking for a comfortable, modern home. Contact us today to arrange a viewing.

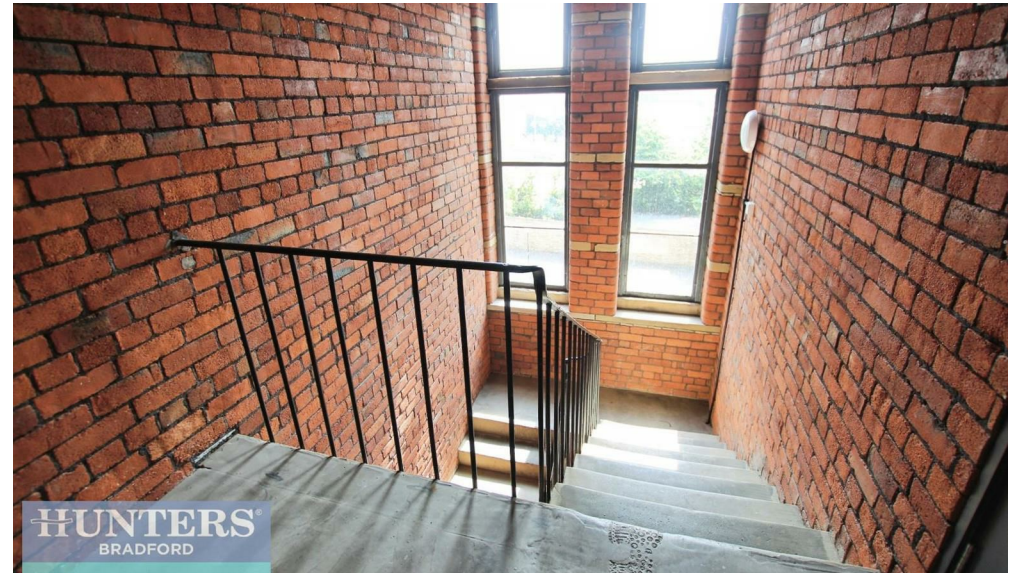
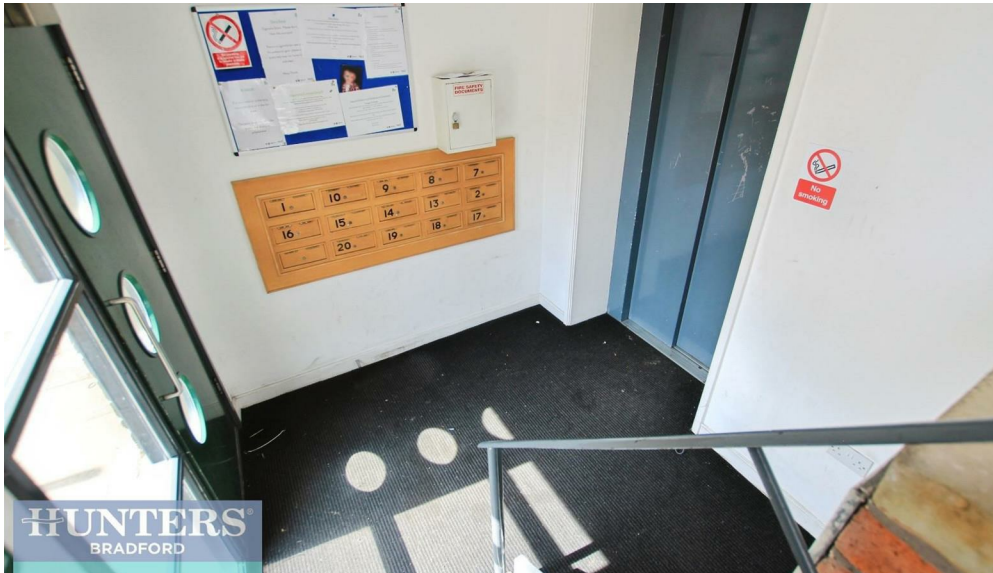




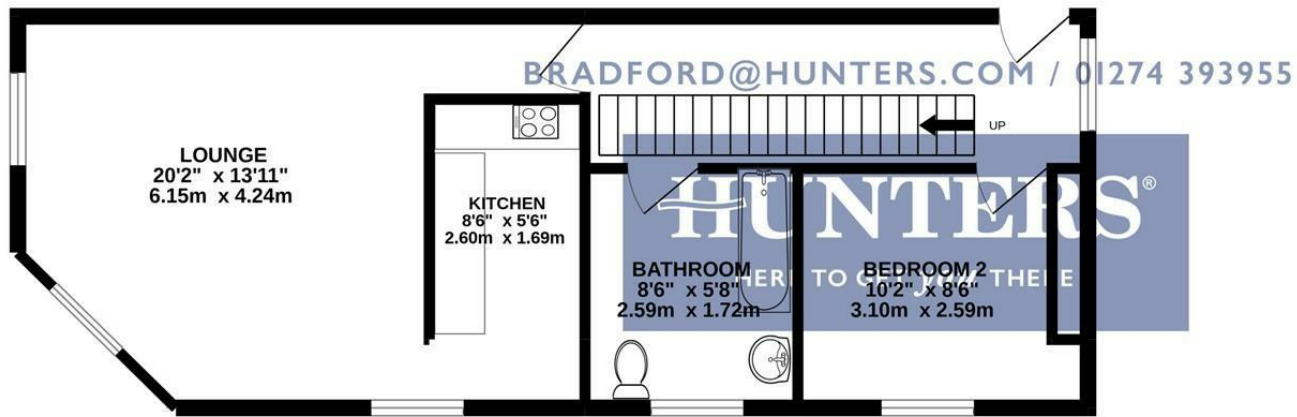


These particulars are intended to give a fair and reliable description of the property but no responsibility for any inaccuracy or error can be accepted and do not constitute an offer or contract. We have not tested any services or appliances (including central heating if fitted) referred to in these particulars and the purchasers are advised to satisfy themselves as to the working order and condition. If a property is unoccupied at any time there may be reconnection charges for any switched off/disconnected or drained services or appliances - All measurements are approximate. If you are thinking of selling your home or just curious to discover the value of your property, Hunters would be pleased to provide free, no obligation sales and marketing advice. Even if your home is outside the area covered by our local offices we can arrange a Market Appraisal through our national network of Hunters estate agents.

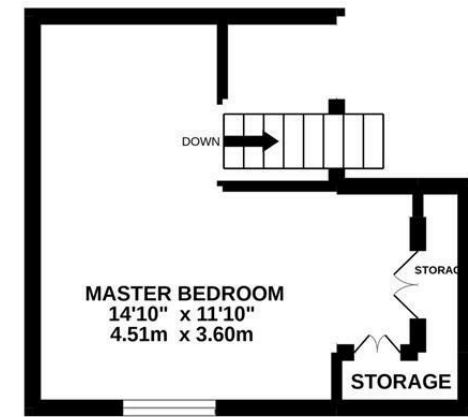




GROUND FLOOR
529 sq.ft. (49.2 sq.m.) approx.

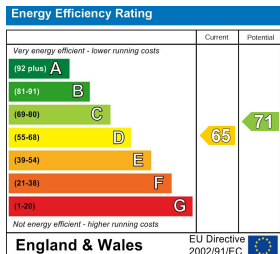


1ST FLOOR
173 sq.ft. (16.0 sq.m.) approx.



TOTAL FLOOR AREA : 702 sq.ft. (65.2 sq.m.) approx.

Whilst every attempt has been made to ensure the accuracy of the floorplan contained here, measurements of doors, windows, rooms and any other items are approximate and no responsibility is taken for any error, omission or mis-statement. This plan is for illustrative purposes only and should be used as such by any prospective purchaser. The services, systems and appliances shown have not been tested and no guarantee as to their operability or efficiency can be given.
Made with Metropix ©2022



Viewing Arrangements

Strictly by prior appointment only through the agent Hunters Hunters Bradford Lettings -
01274 393955 <https://www.hunters.com>



HUNTERS[®]
BRADFORD

HUNTERS.COM